



**BRUKER SPATIAL BIOLOGY**

**CellScape™**

Precise Spatial Proteomics

FOR RESEARCH USE ONLY. NOT FOR USE IN DIAGNOSTIC PROCEDURES.

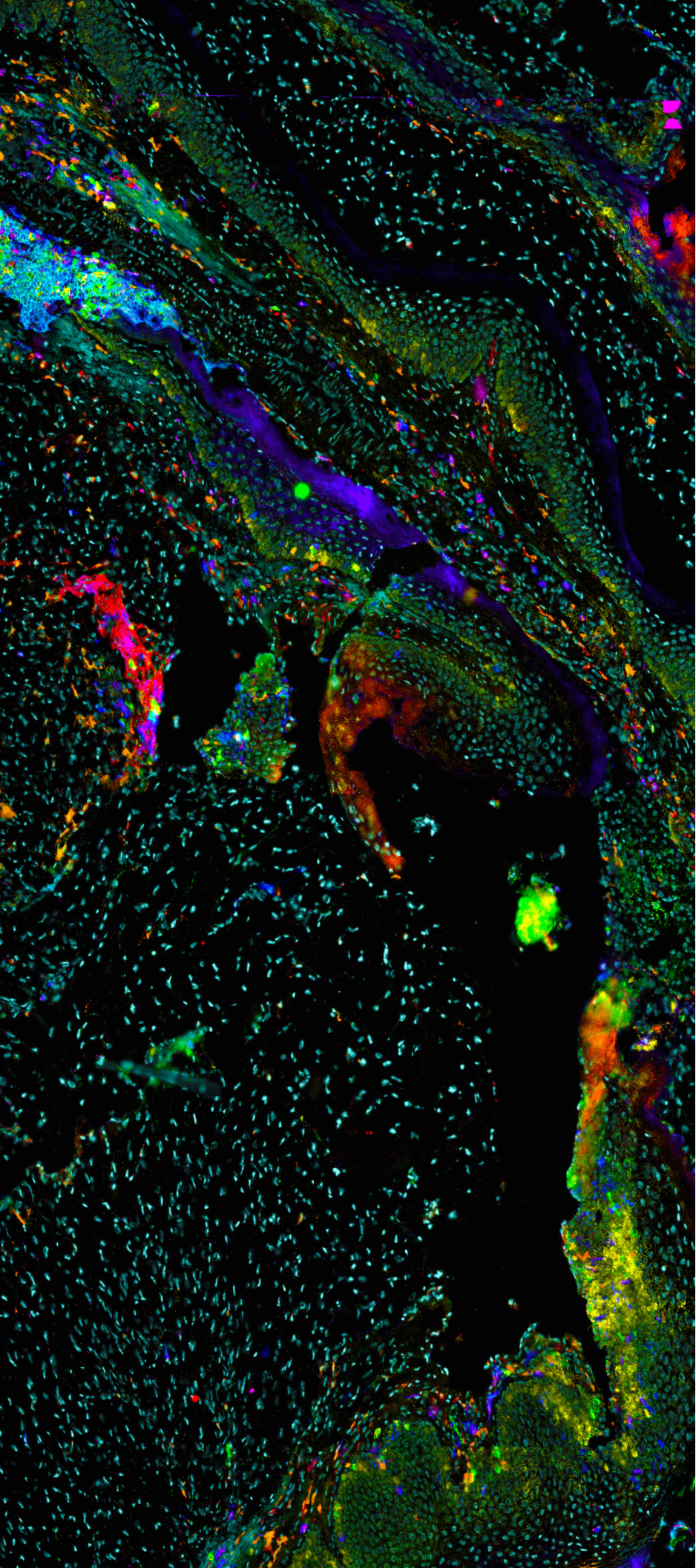




## At the Forefront of Spatial Biology

The CellScape platform is your end-to-end solution for highly multiplexed spatial proteomics and single-cell analysis. With an advanced imaging system, streamlined fluidics for walk-away automation, and unprecedented flexibility in assay design, the CellScape platform accelerates biological research from discovery to translation.





---

# From Images to Discovery

## Quantitative Performance

The only spatial biology platform with both single-cell resolution and high dynamic range (HDR) microscopy, the CellScape platform enables truly quantitative phenotyping with exceptional data quality.

---

## Straightforward and Reliable

Simple chemistry and robust performance that gets you productive sooner, with scalable cost, throughput, and plex.

---

## Unmatched Flexibility

An open platform that supports the assays and sample types you need, including fresh frozen tissue, FFPE tissue, and cell suspension samples from any model organism.

---

## Modularity at Any Time

Seal, store, and probe samples with additional modular panels or markers days or months after an initial experiment, enabling an unparalleled hypothesis-driven approach to high-plex spatial biology.

---

# Introducing EpicIF™ Technology

## Enhanced Photobleaching in Cyclic Immunofluorescence

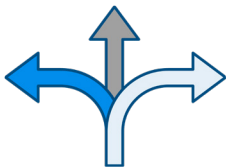
Introducing our groundbreaking cyclic immunofluorescence workflow—gentle yet powerful signal removal, compatible with nearly any fluorophore, and designed to enhance your unique high-plex spatial proteomics research without compromise.



---

### Expansive

Use any organic dye from the rhodamine, cyanine, or BODIPY families on the CellScape instrument.



---

### Flexible

Combine multiple fluorescence-based assays, including IF, RNA-ISH, and proximity ligation, on the same sample.



---

### Reliable

Gentle signal removal with EpicIF Solution and white light preserves epitope and tissue integrity.

EpicIF is powered by the new CellScape Navigator software for intuitive experiment planning, instrument control, and data export.

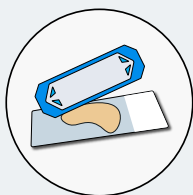
**Learn More  
about EpicIF  
Technology**



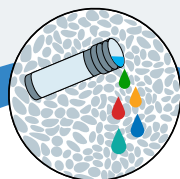
# The EpicIF Workflow

For the CellScope Precise Spatial Proteomics platform

## Sample Prep



Stain



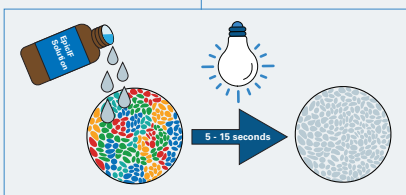
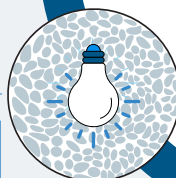
## Data Analysis



Image



Erase



1

### STAIN

Stain sample with up to 5 fluorescently labeled antibodies in a single cycle

2

### IMAGE

Quality optics and HDR imaging achieve true single-cell resolution

3

### ERASE

Filtered photobleaching with EpicIF Solution gently eliminates fluorescence signal to start the cycle again

4

### REPEAT

Utilize unlimited cycles to achieve highly multiplexed biomarker detection



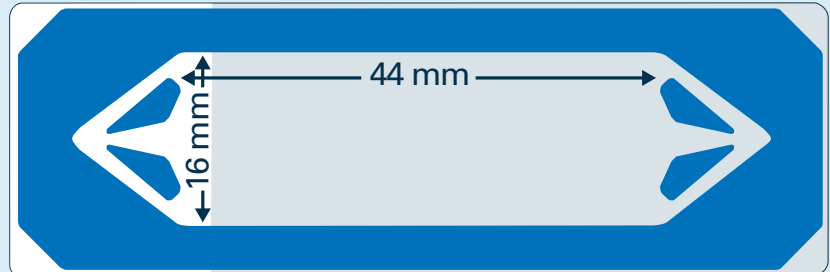
---

# Flexibility for Today... And Tomorrow

Use the CellScape Whole-Slide Imaging Chamber for automated multiplex staining, high-resolution imaging, and safe sample storage.

## See Everything

View large tissue sections to uncover key biological insights and enable complex analyses. Uncover tissue diversity, identify patterns of cell-cell interactions, and locate regions of interest for further exploration.



Convert any standard microscope slide into a microfluidic chamber, maximizing available imaging area.

## Versatile Sample Compatibility

The CellScape Whole-Slide Imaging Chamber enables the analysis of:

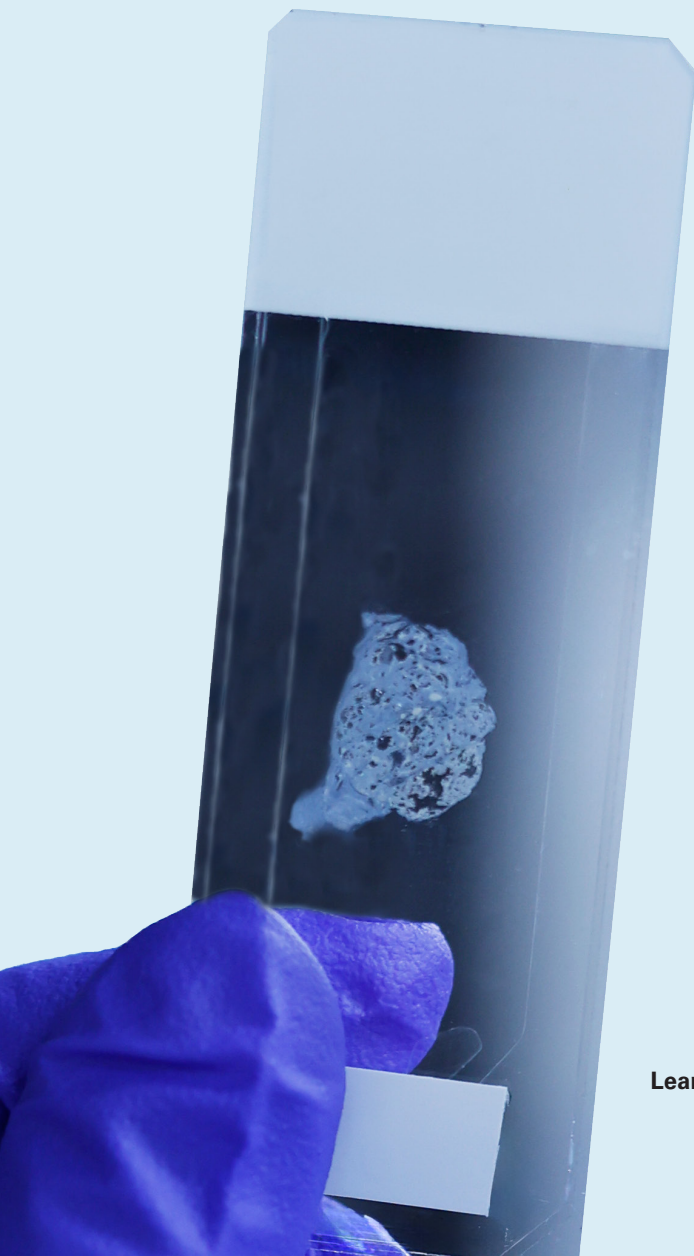
- Large tissue sections (FF or FFPE)
- Technical replicates on the same slide
- Tumor microarrays (TMAs)

---

## Future-Proof Spatial Biology

Once samples are loaded in a Whole-Slide Imaging Chamber, they can be safely stored for future analysis. CellScape analysis is non-destructive and the same sample can be explored repeatedly, adding new markers each time.

**Learn more about Data-Driven Assay Expansion**





# Accessible Platform, Reagent Flexibility

With flexible reagent choices and panel design, researchers can design custom panels for any immunology, oncology, or neurobiology application.



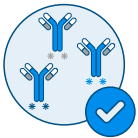
## Use Your Markers

Compatible with fluorescently labeled antibodies from any vendor.



## Use Our Markers

Select from 350+ verified compatible antibodies from our list.



## Use Pre-Optimized Panels

Ready-to-use, expandable multiplex antibody panels with optimized protocols, designed and validated for CellScape give you a jump start on successful assay design.

Explore our  
Marker  
Database



Compatible with the new EpicIF workflow, VistaPlex™ Next-Generation Assay Kits support key research applications, including:

- Cell Segmentation
- Tissue Architecture
- Immune Profiling
- Coming Soon: Myeloid Profiling





## Fully Automated & Ultra High Plex

Automated liquid handling and a 4-sample holder allows for continuous data acquisition around the clock. The iterative staining, imaging, and signal removal workflow enables hands-free execution of highly multiplexed assays.



---

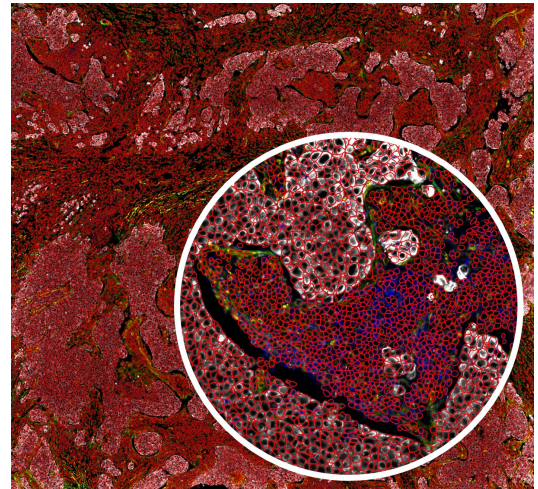
# Designed for Quantification

The CellScape platform enables advanced quantitative analyses of every cell in your sample via any third-party analysis pipeline.

---

## Cell Segmentation

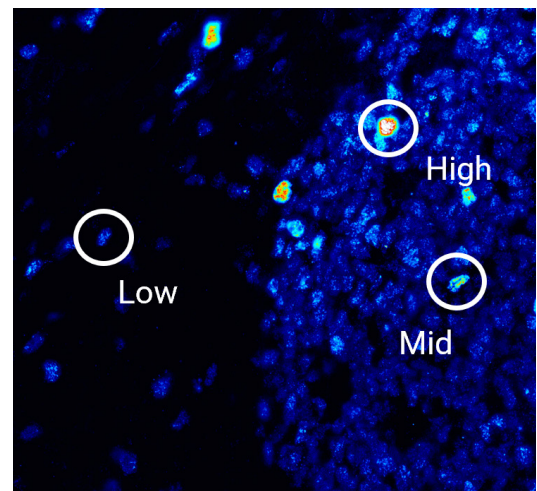
Pair the high-resolution imaging of the CellScape platform with the VistaPlex Segmentation Kit for accurate definition of cell boundaries. This method is more precise than nuclear segmentation and enables the capture of diverse cellular morphologies.



---

## HDR Enables Quantitative Phenotyping

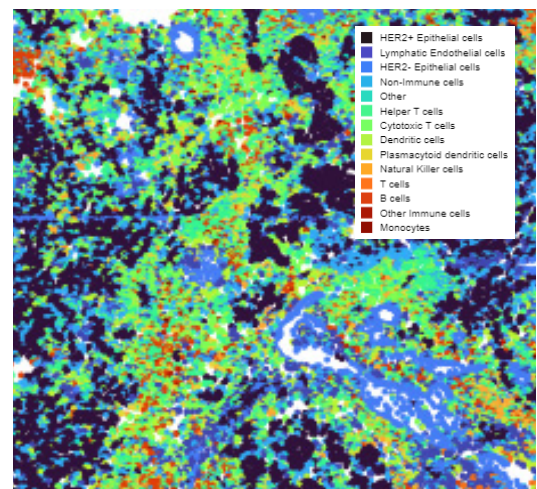
Sub-cellular resolution and high dynamic range (HDR) together are required for quantitative and precise deep phenotyping. With this combination fully automated, the CellScape platform is optimized for generating spatial proteomics datasets.



---

## Advanced Spatial Analyses

With a standard OME-TIFF file output, data from the CellScape platform can be analyzed with open-source or subscription-based spatial analysis pipelines, providing versatility in data analysis to advance your research and discovery.

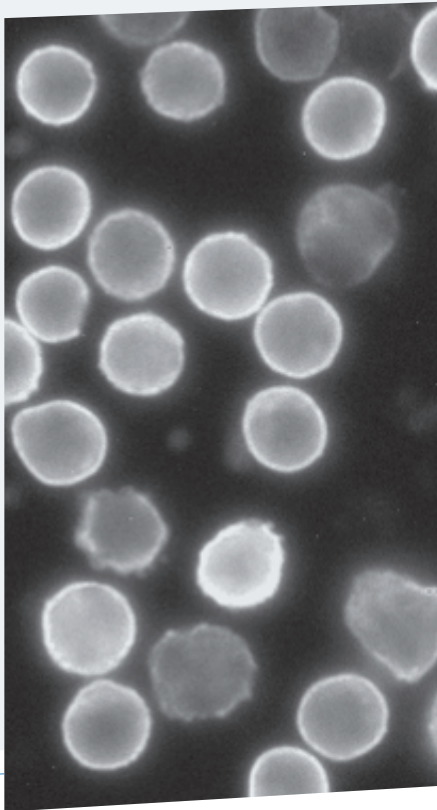




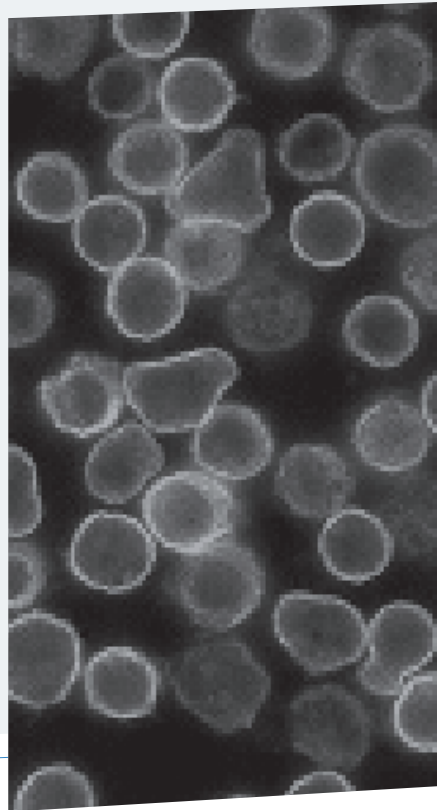
---

## Resolve Every Detail

With a crisp, 182 nm/pixel digital sampling rate, CellScape can not only clearly define cell boundaries, but also reveal the subcellular information critical to your studies.



**CellScape**  
182 nm/pixel



**Other  
spatial biology  
platforms**  
500 nm/pixel

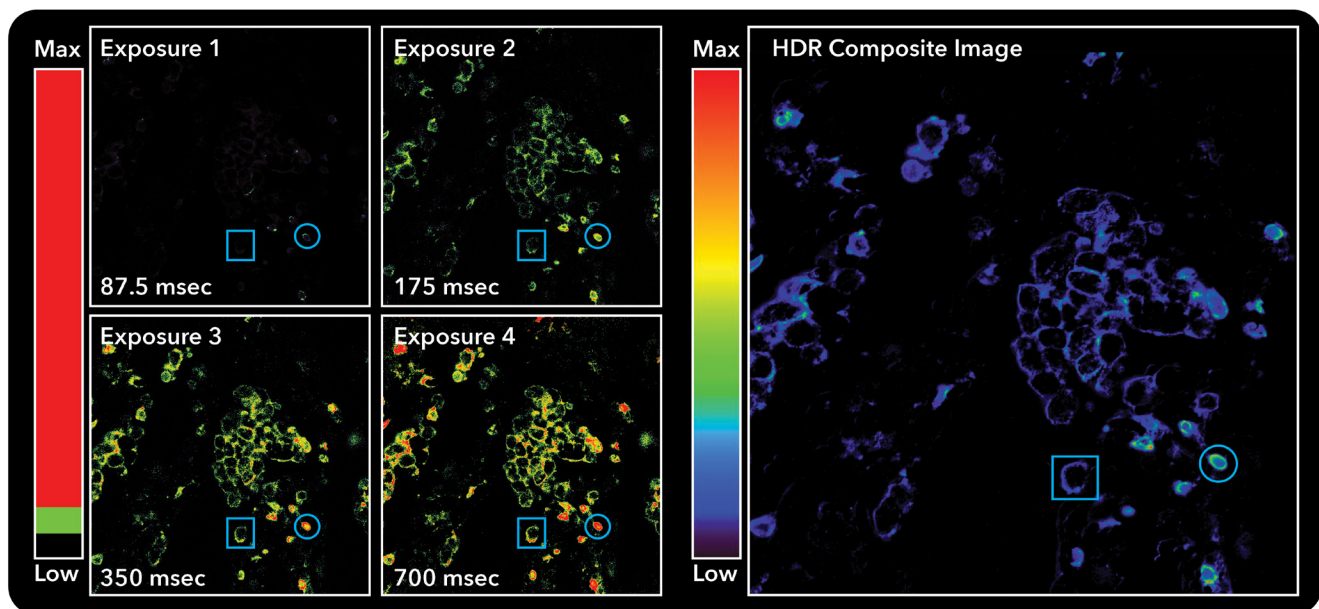


**Multicellular  
resolution**  
10,000 nm/pixel



# Accurate Phenotyping

See what you've been missing. Our unique High Dynamic Range (HDR) image acquisition pipeline enables accurate capture of both high-and low-expressing targets simultaneously.



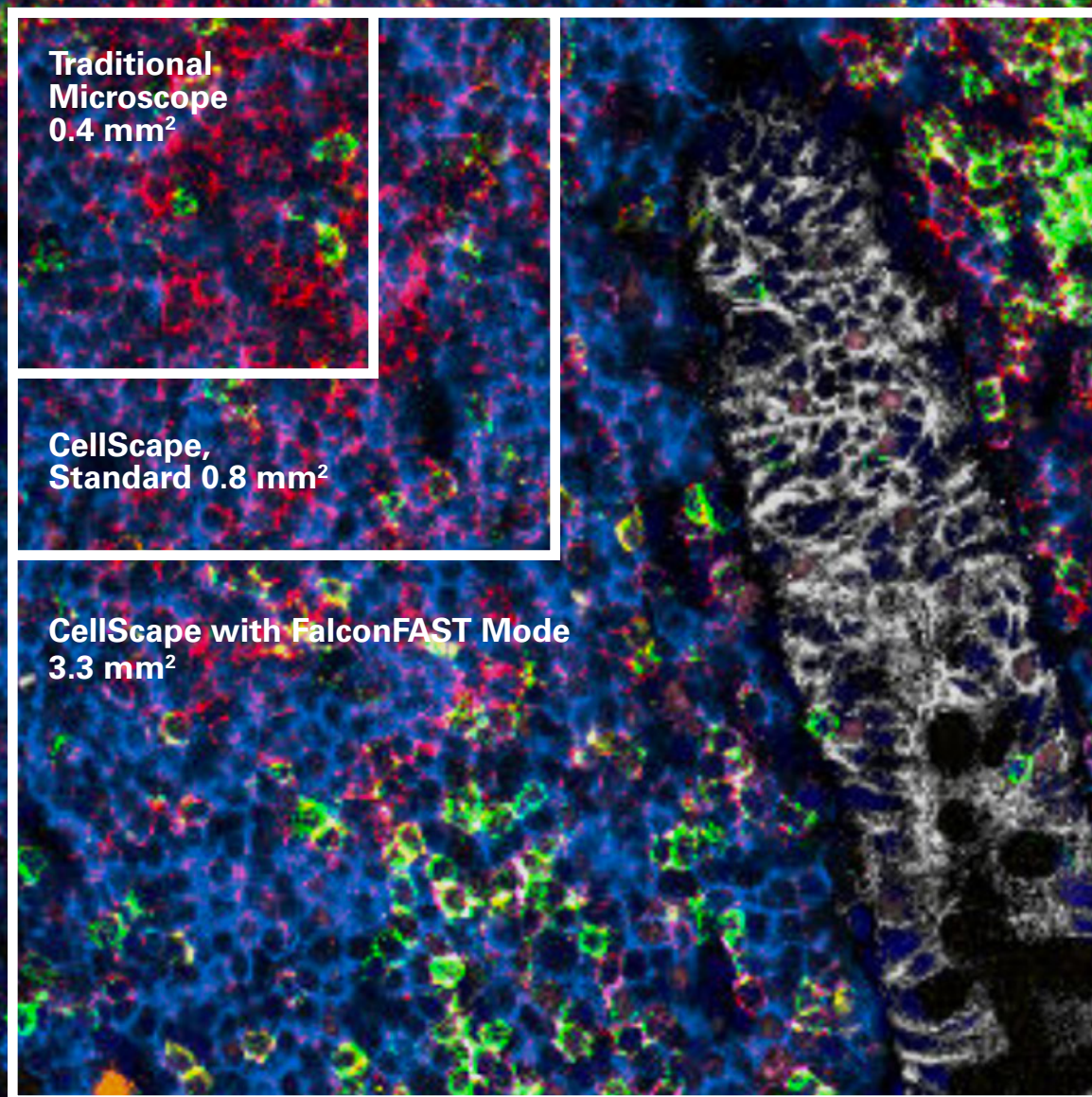
**Low Expression** can only be detected with long exposures, yet this over-saturates bright cells.

**High Expression** may be captured with shorter exposures, but at the loss of dim signal.

Only **HDR multi-exposure fusion** can depict the dimmest cells and the brightest cells on a single scale without oversaturation.

Learn more  
about HDR  
microscopy





## More Data. Less Time.

The CellScape platform offers a field of view twice as large as standard microscopes so you can capture twice the amount of data in the same time, all with even better resolution.

With the optional FalconFAST™ mode, you can capture a field of view 4x larger than with CellScape Standard Mode or 8x larger than a traditional microscope.

Cut your experiment times in half. Or by eight.



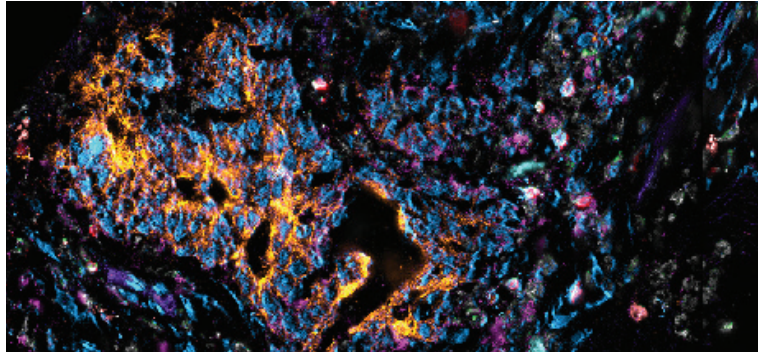
---

# Explore Applications

---

## Develop Custom Assays

Because CellScape Precise Spatial Multiplexing uses open-source reagents and protocols, the platform supports researchers developing new methods, including combining spatial proteomics with spatial transcriptomics on the same sample (Jarosch et al., 2022).

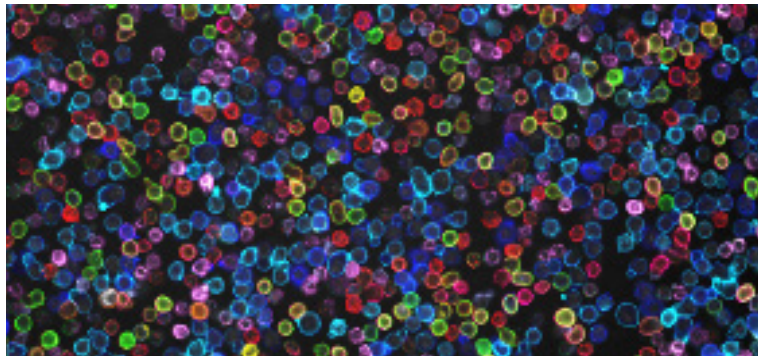


Human colon cancer tissue stained with a 21-plex assay panel.

---

## Resolve Distinct Subpopulations

Most cameras are insufficient to capture the full range of protein expression within a single tissue specimen. CellScape uses HDR imaging and first-rate optical components to provide the greatest sensitivity for the highest quality data.

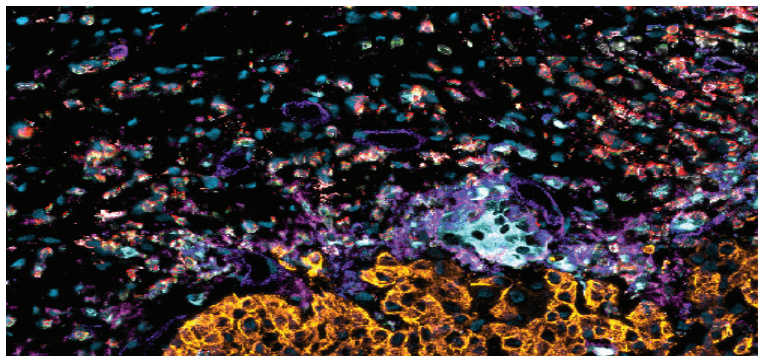


Human PBMCs stained with an 11-plex assay panel.

---

## Discover Rare Cell Types

Cells of biomedical interest are often present in low quantities. CellScape technology has been utilized to identify rare cell populations in colon epithelial tissue (Leng et al., 2019) and identify rare B cell types in tumor microenvironments (Zhang et al., 2024).



Human lung cancer tissue stained with a 12-plex assay panel.

Visit our  
Resource  
Library

# CellScape Platform

## Product Specifications

### Instrument Specifications

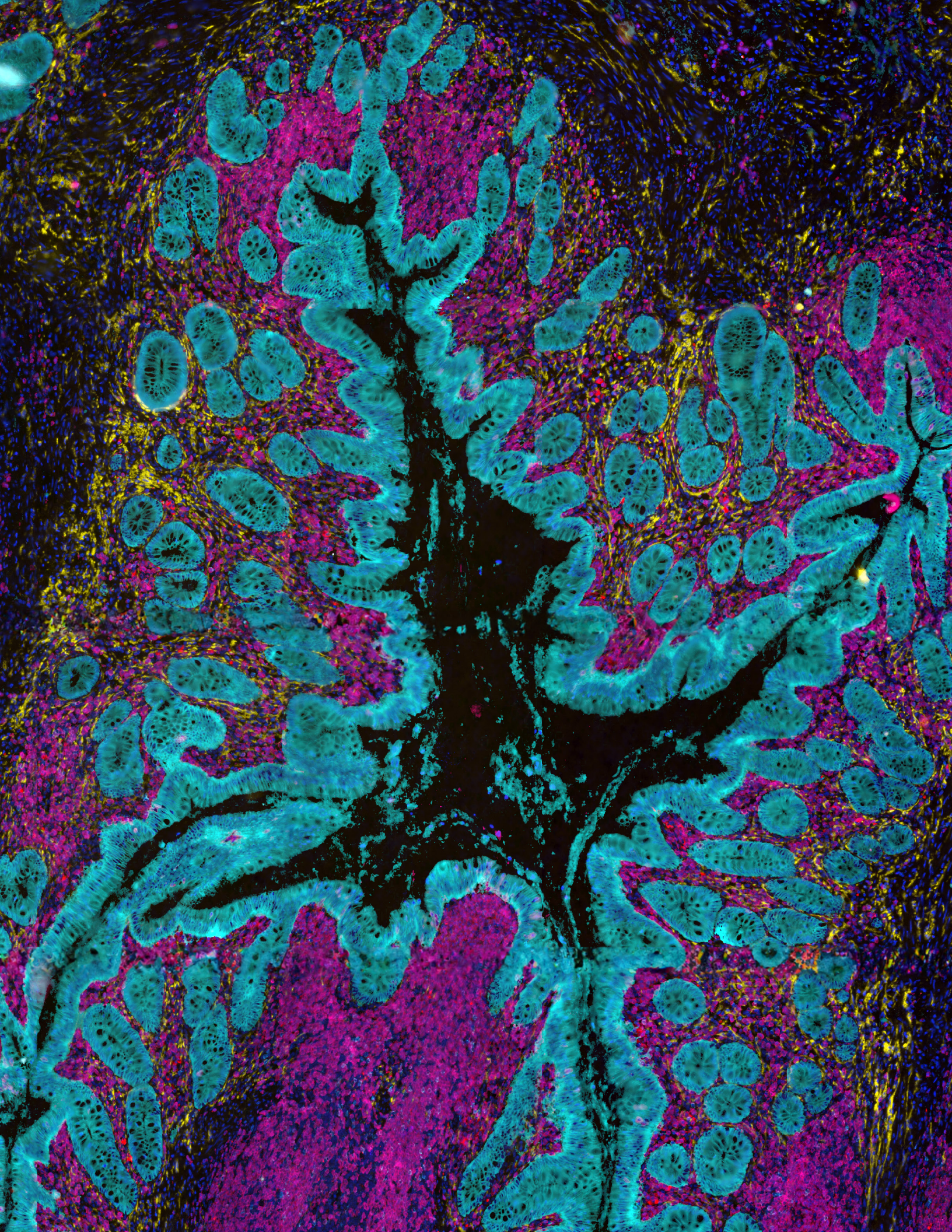
<b>Dimensions</b>	CellScape Instrument: 57 cm x 38 cm x 32 cm PlexFlo Fluidics Unit: 37 cm x 30 cm x 20 cm
<b>Weight</b>	60 kg
<b>Additional Components</b>	Light source, eBox, degasser, computer and monitor, barcode scanner
<b>Automation</b>	Walk-away staining, image acquisition, and enhanced photobleaching
<b>Light Source</b>	120 W Mercury arc lamp
<b>Imaging Modes</b>	Transmitted and fluorescence light
<b>Sample Compatibility</b>	FFPE tissues, FF tissues, Cell suspensions
<b>Fluorescence Channels</b>	Spectrally distinct filter sets for 5 color imaging
<b>File Formats</b>	OME-TIFF files
<b>Software</b>	CellScape™ Navigator: Single application that integrates experiment planning, instrument control, and data export

	<b>CellScape Standard Mode</b>	<b>CellScape FalconFAST Mode</b>
<b>Objective</b>	Plan Apo 20X   0.80 NA	Plan Fluor 10X   0.30 NA
<b>FOV Size</b>	0.8 mm <sup>2</sup>	3.3 mm <sup>2</sup>
<b>Resolution*</b>	278 nm	742 nm
<b>Digital Sampling**</b>	182 nm/pixel	365 nm/pixel

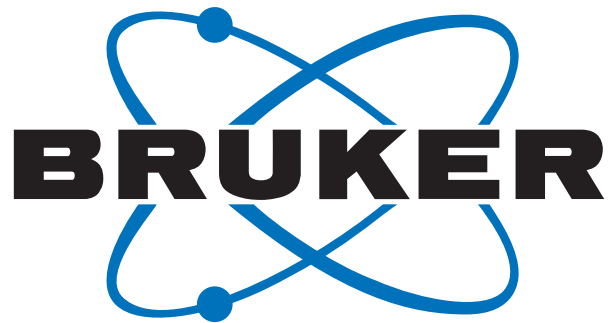
\* Resolution is calculated with the following equation:  $r = 0.61\lambda/NA$  using the shortest excitation wavelength ( $\lambda = 365$  nm). The resolution in other channels will be higher.

\*\* Digital sampling is independent of resolution and is calculated by dividing the pixel size of the camera by magnification.









**Bruker Spatial Biology** | For more information, visit [BrukerSpatialBiology.com/CellScape](https://BrukerSpatialBiology.com/CellScape)

**Bruker Spatial Biology, Inc.**

530 Fairview Avenue North  
Seattle, Washington 98109

T (888) 358-6266  
F (206) 378-6288

**Sales Contacts**

North America  
EMEA

[nasales.bsb@bruker.com](mailto:nasales.bsb@bruker.com)  
[emeasales.bsb@bruker.com](mailto:emeasales.bsb@bruker.com)

Asia Pacific & Japan  
Other Regions

[apacsales.bsb@bruker.com](mailto:apacsales.bsb@bruker.com)  
[globalsales.bsb@bruker.com](mailto:globalsales.bsb@bruker.com)

**FOR RESEARCH USE ONLY. Not for use in diagnostic procedures.**

© 2024 Bruker Spatial Biology, Inc. All rights reserved. CellScape, VistaPlex, EpiclF, and FalconFast are trademarks or registered trademarks of Bruker Spatial Biology, Inc., in the United States and/or other countries. Any other trademark that appears in this document is the property of its respective owner.

AUG 2024 MK5188