

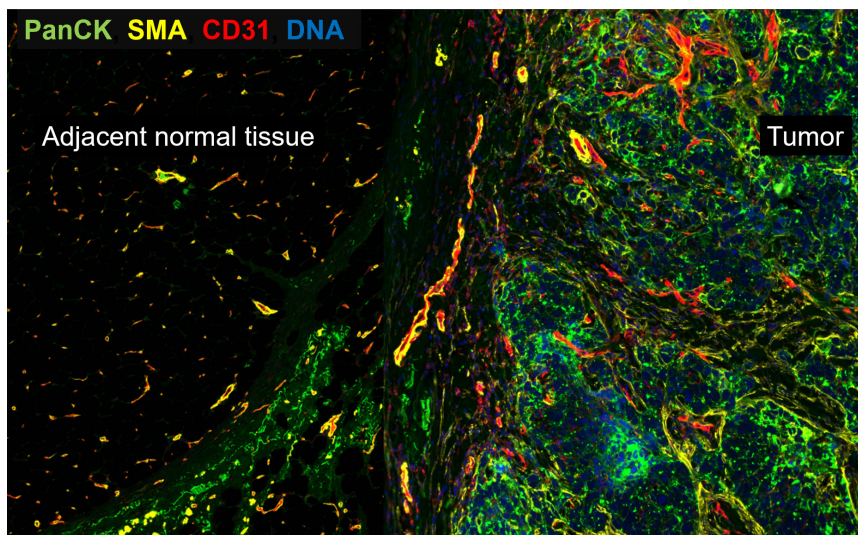
Breast Breast Cancer

Study Purpose

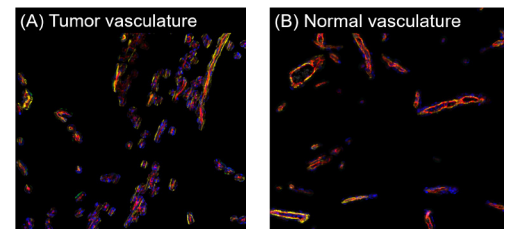
In this breast cancer study, the GeoMx Human Whole Transcriptome Atlas was used to profile the tumor vasculature and normal vasculature in adjacent surrounding non-tumor tissues. CD31, a marker for vascular differentiation, was used to guide region of interest (ROI) selection to enrich for vasculature. Differential expression analysis between tumor tissue and normal tissue revealed differences in the biology of the vasculature in the tumor versus the surrounding tissue.

Study Summary

Sample Type	FFPE
Species	Human
AOI* Strategy	Cell-type specific
Assay	Human Whole Transcriptome Atlas
Morphology Markers	Pan-Cytokeratin (PanCK), SMA, CD31, DNA
Targets Detected	12,009 targets
Application	Pathway analysis

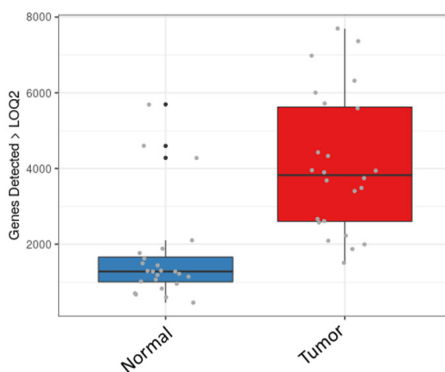


Segmentation Strategy



Legend

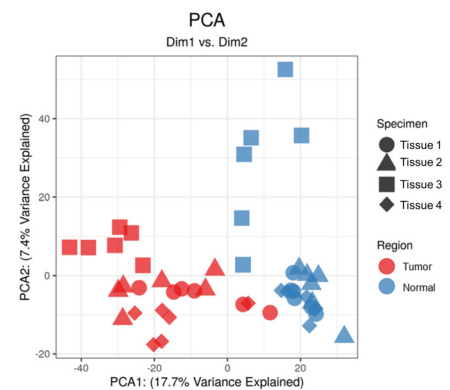
CD31 is a marker for endothelial cells and vascular differentiation. In this study, vasculatures from tumor (A) and normal (B) regions were segmented using CD31 fluorescent staining.



Legend

Left:
The number of targets detected above the background (LOQ2*) by AOI groups.

Right:
Principal component analysis (PCA) plot.



*AOI = Area of Illumination

Acknowledgement: We sincerely thank Drs. Laura Bray and Akhilandeshwari Ravichandran from Queensland University of Technology for sharing these images.

For more information, please visit

<https://nanosttring.com/geomx-morphology-markers/>

NanoString Technologies, Inc.
530 Fairview Avenue North
Seattle, Washington 98109

T (888) 358-6266
F (206) 378-6288

nanosttring.com
info@nanosttring.com

Sales Contacts
United States us.sales@nanosttring.com
EMEA: europe.sales@nanosttring.com

Asia Pacific & Japan apac.sales@nanosttring.com
Other Regions info@nanosttring.com

FOR RESEARCH USE ONLY. Not for use in diagnostic procedures. ©2022 NanoString Technologies, Inc. All rights reserved. GeoMx, NanoString, NanoString Technologies, and the NanoString logo are marks or registered trademarks of NanoString Technologies, Inc., in the United States and/or other countries.